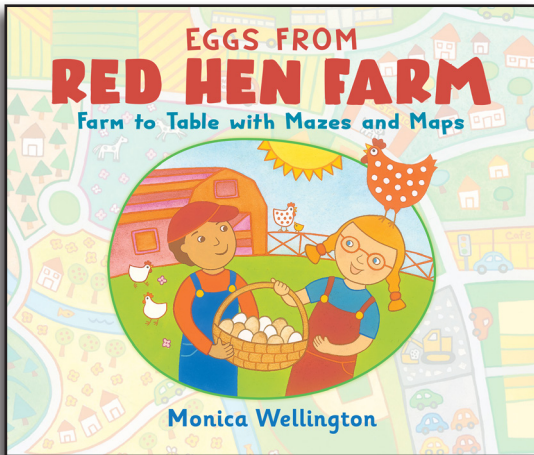


HOLIDAY HOUSE LESSON PLAN

INTEREST
LEVEL
PreK - 2



HC: 9780823447824

Eggs From Red Hen Farm

Monica Wellington

A fun story with maps and mazes shows children where their food comes from.

SOCIAL STUDIES CONCEPTS

Map Skills (Geography), Producers and Consumers (Economics)

COMPREHENSION STRATEGIES

Using Prior Knowledge, Predicting

EXTENSION ACTIVITIES

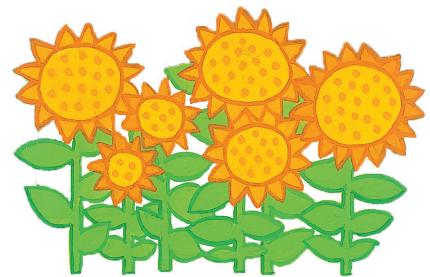
- Start with a map skills activity to familiarize students with cardinal directions. Help students add the words north, south, east, and west to the compass rose on the Color the Squares activity sheet. Then give these directions orally.
 - Find the square north of the black square and color it red.
 - Find the square east of the red square and color it yellow.
 - Find the square south of the yellow square and color it green.
 - Find the square south of the green square and color it blue.
 - Find the square west of the blue square and color it orange
- Do you know anyone that raises chickens? Have you ever been to a farmer's market? Add information to the discussion if students do not have many experiences. You might consider showing photos to help generate prior knowledge.
- In this story, Ned and Ruby live on a farm that raises chickens. What do you think they will do with the eggs from their chickens? Who are some people that might want to buy eggs?
- Display a large compass rose with the four cardinal directions. As you read the story aloud have volunteers trace each path that is described in the story on each map in the book. Have students note in which direction Ruby travels.
- Have students predict what surprise the baker will give Ruby and Ned.
- Explain that producers are people that make goods or provide a service and that consumers are people that pay for goods or services. Let's find the producers and consumers in this story.



- Have partners discuss examples of producers and consumers in their own lives. Have volunteers share their thinking with the class.
- Explain that the relative location of a place means where the place is in relation to other places. Direction words like north, south, east, and west are used to describe the relative location of places.
- Provide students with a map of the United States. Divide students into pairs and explain that they should use the map and make a list of five different ways to describe the relative location of their state. Encourage students to use natural features such as rivers and other states in their descriptions. Give students time to complete the task, then share their lists with the whole group.

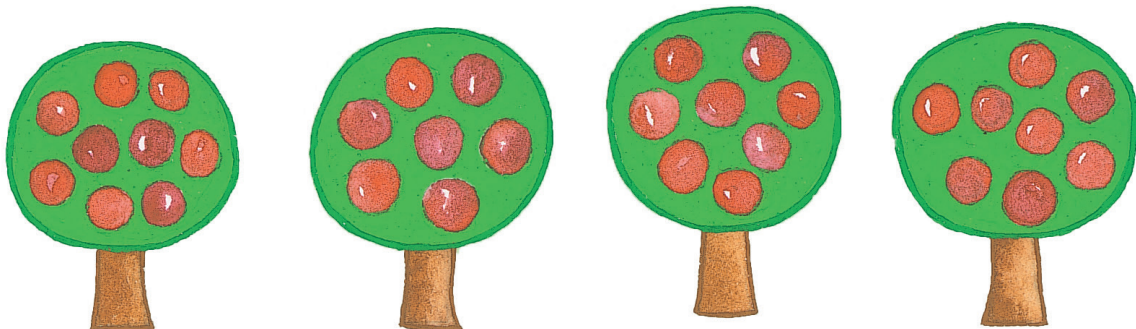
Possible answers include the following:

- Michigan is located near the middle of the U.S.
- Michigan is located east of the Mississippi River.
- Michigan is located north of Ohio and Indiana.
- Michigan is located next to Ontario, Canada.
- Michigan is located in the northern part of the U.S.



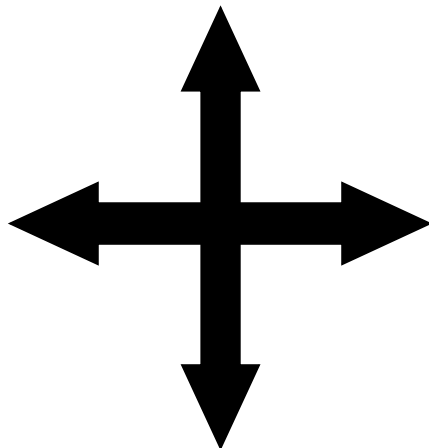
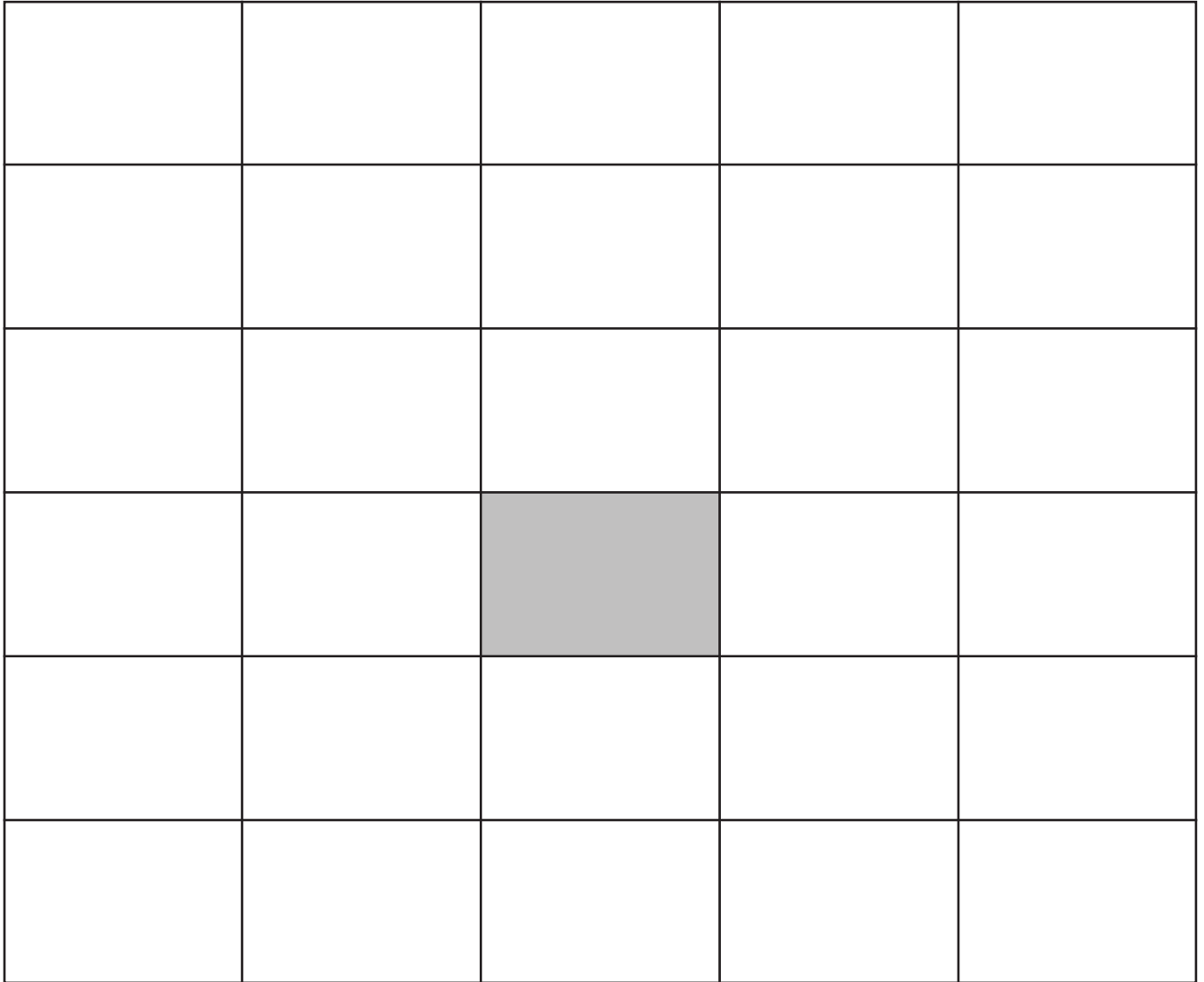
ABOUT THE CREATOR

Monica Wellington was raised in Germany and Switzerland. She studied pottery, painting, and printmaking at the University of Michigan School of Art and later studied illustration under Bruce Degen at the School of Visual Arts. She has illustrated more than forty books for children and has written most of them. *Dear Ballerina*, published by Holiday House, was inspired by Monica's daughter, a dancer with Les Ballets de Monte Carlo.



ACTIVITY SHEET

COLOR THE SQUARES



ACTIVITY SHEET

CIRCLE THE WORD THAT IDENTIFIES WHETHER A PRODUCER OR CONSUMER IS SHOWN IN THE PICTURE.



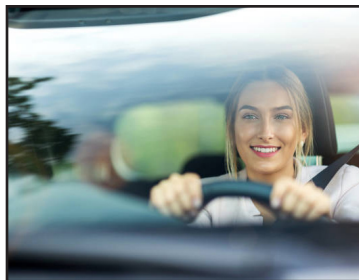
PRODUCER

CONSUMER



PRODUCER

CONSUMER



PRODUCER

CONSUMER



PRODUCER

CONSUMER



PRODUCER

CONSUMER



PRODUCER

CONSUMER